

**BLUE UNIT**  
**Neurology**  
**NINS**

**Patient and Disease Profiles**  
**Blue Unit 2018**  
**1 January to 31 December 2018**

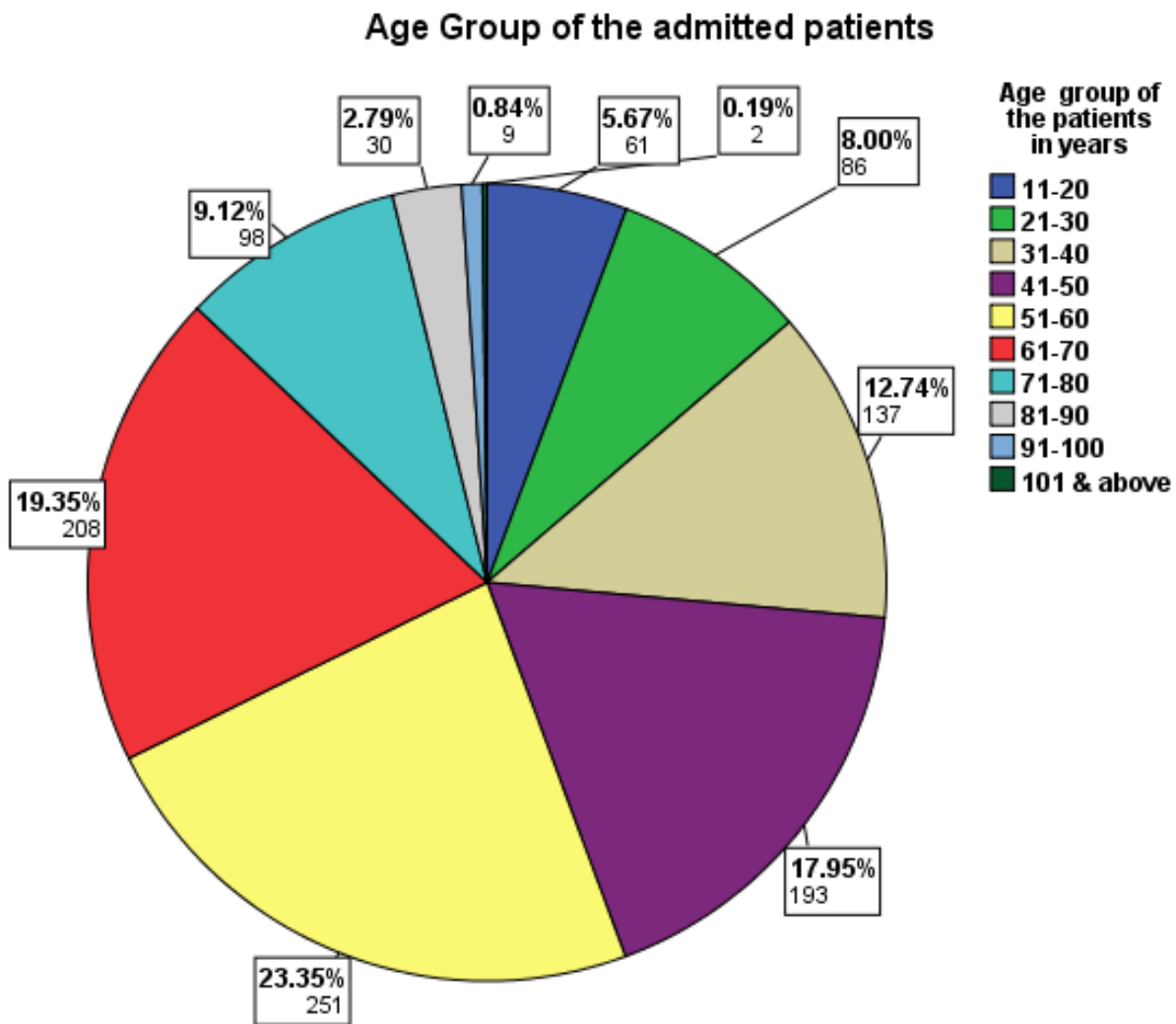
## **Total Statistics**

- Total Death = 201 patients
- Total Admission = 1075 cases
- Incidence of Death =  $201/1075 \times 100 = 18.70\%$

Total Patient Days = 8760 days

Average Length of Stay (ALOS) = 8.14 days

Bed Occupancy Rate (BOR) = 100%



**Figure I: Age Distribution**

### Patients admitted over different months

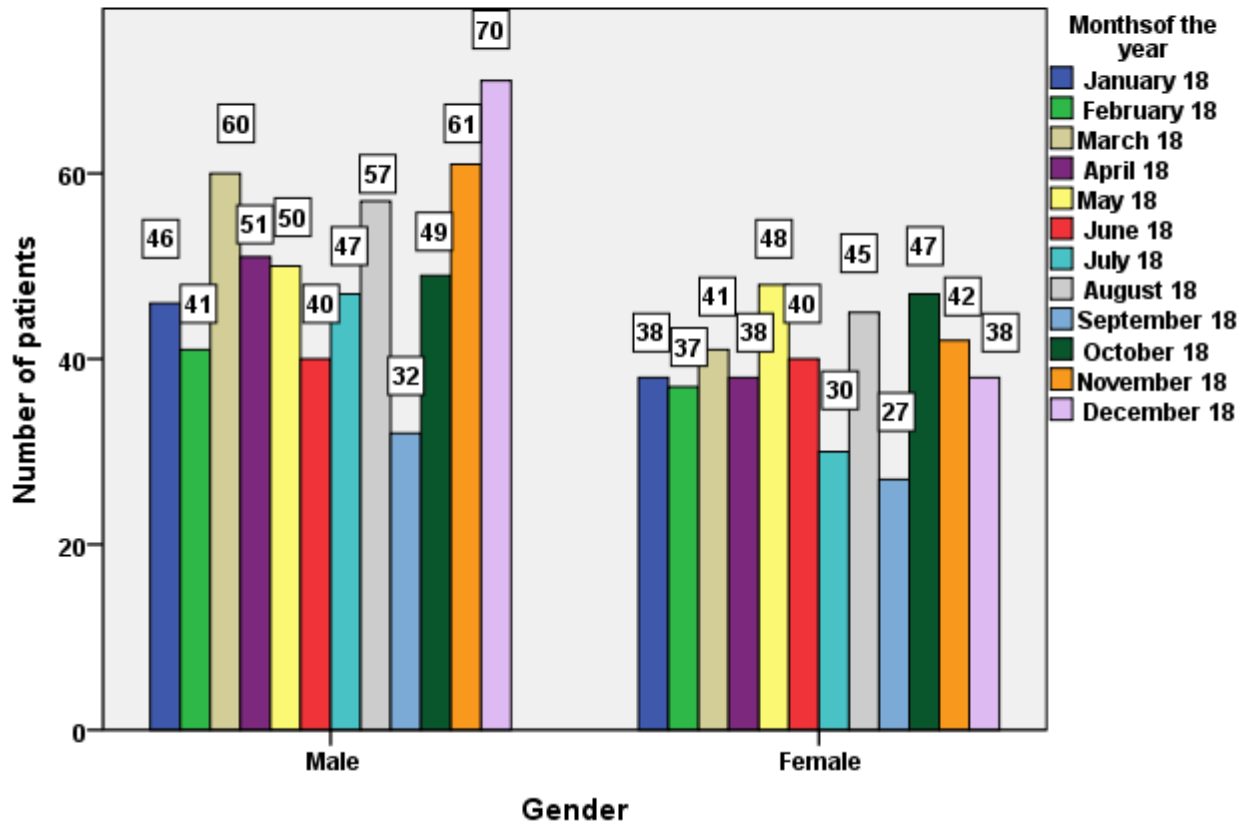


Figure II: Month Wise Distribution of patients

### Patients Of Different Divisions

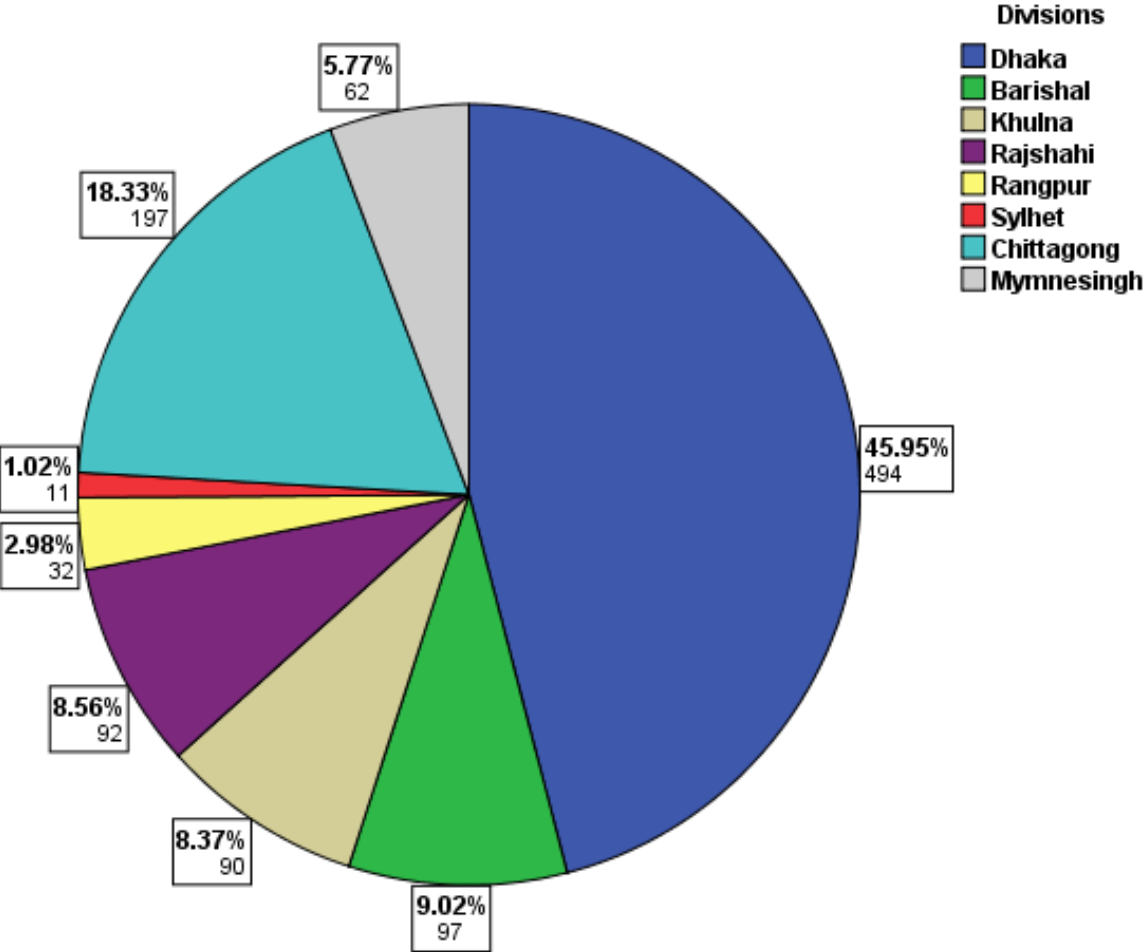
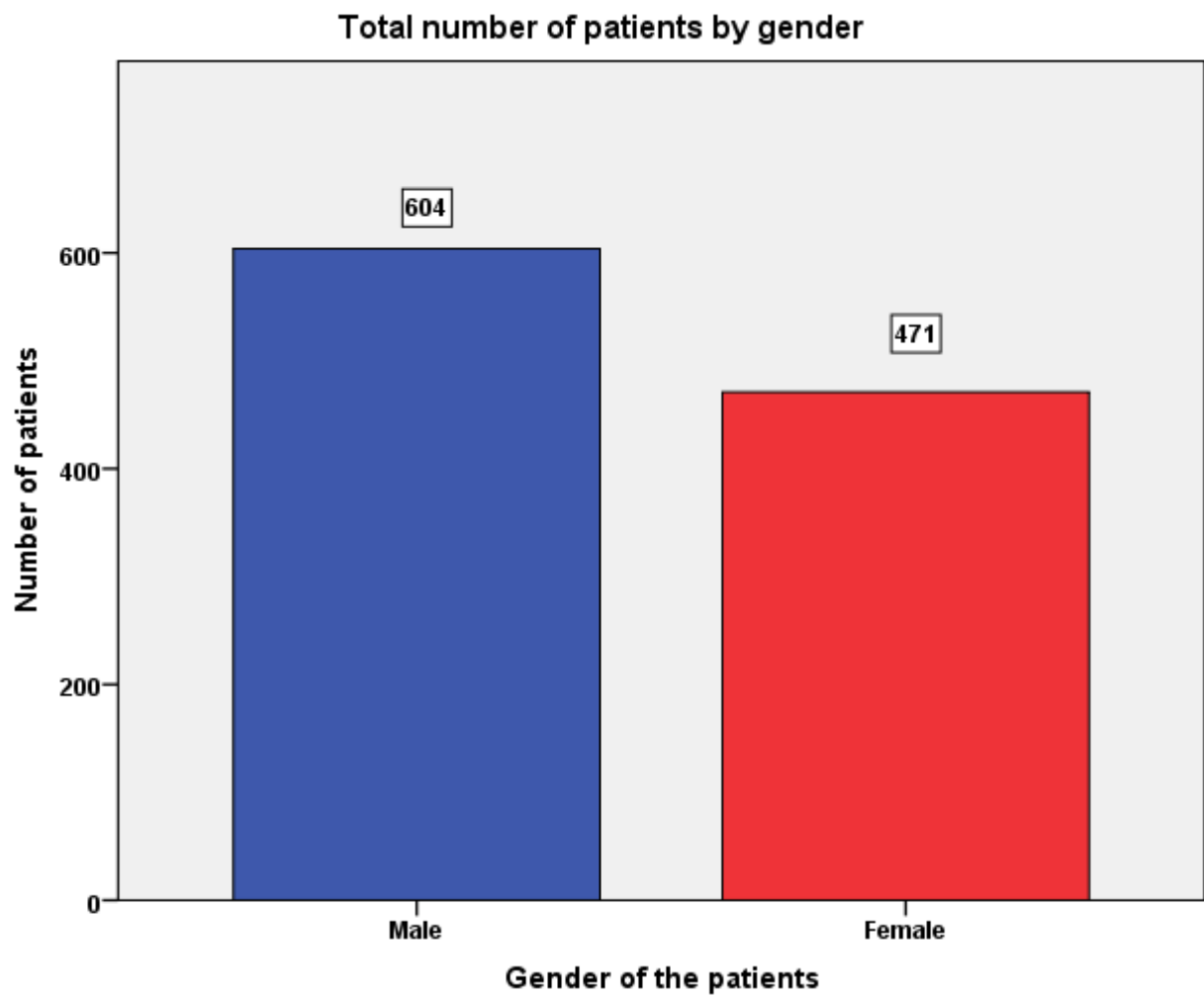


Figure III: Area wise Distribution of patients



**Figure IV: Gender Distribution**

**Table 1: Total Bed Distribution for Blue Unit**

<b>Floor</b>	<b>Number of Beds</b>
4 <sup>th</sup> Floor	6
5 <sup>th</sup> Floor	7 (Average)
6 <sup>th</sup> Floor	4
7 <sup>th</sup> Floor	5 (Average)
8 <sup>th</sup> Floor	2 (Average)

**Table 2: Ward wise distribution of admitted patients**

<b>Wards</b>		<b>Frequency</b>	<b>Percent</b>
	Ward-2(Non paying male ward)	308	28.7
	Ward-4(Paying male ward)	267	24.8
	Ward-6(Non paying female ward)	178	16.6
	Ward-8(paying female ward)	264	24.6
	W-10(Cabin)	58	5.4
	Total	1075	100.0



**DISEASE WISE DISTRIBUTION OF PATIENTS(BLUE)**

Diseases (System wise)	Sub Types	Gender		Total
		Male	Female	
A)Cerebro Vascular Diseases	1.Ischemic Stroke	147(63.4%)	85(36.6%)	232(21.6%)
	2.ICH	290(57.7%)	160(42.2%)	379(35.3%)
	3.CVST	4 (28.6%)	10 (71.4%)	14 (1.3%)
	4. SAH	43(41.3%)	61(58.6%)	104 (9.7%)
	5.Intraventricular Hemorrhage	1 (25%)	3 (75%)	4 (0.37%)
	6.Cerebellar Hemorrhage	6(66.7%)	3(33.3%)	9(0.84%)
	7. Brainstem Hemorrhage	8(61.54%)	5(38.46%)	13(1.21%)
	8.TIA	1(100%)	0(0%)	1(0.09%)
	9.AVM	0(0%)	1(100%)	1(0.09%)
	10. Moya Moya Disease	0(0%)	1(100 %)	1(0.09%)
	11.NAION	1(100%)	0(0%)	1(0.1%)
B) Inflammatory /Demyelinating Diseases	1.Optic Neuritis	2 (40.0%)	3 (60.0%)	5 (0.46%)
	2.Multiple Sclerosis	0(0%)	2 (100%)	2 (0.19%)
	3.ADEM	0 (0%)	2 (100%)	2 (0.19%)
	4.NMO Spectrum Disorders	2 (66.7%)	1 (33.3%)	3 (0.28%)
	6.Transverse Myelitis	8 (61.5%)	5 (38.5%)	13 (1.2%)
	7.Tolosa Hunt Syndrome	1 (100%)	0 (0%)	1(0.09%)
	8. Demyelinating Disase	2(100 %)	0(0%)	2(0.2%)
	9.Encephalitis	10(62.5%)	6(37.5%)	16
C) Neuropathies	1.GBS(AMAN)	6 (54.5%)	5(45.5%)	11 (1.0%)
	2.GBS (AMSAN)	0 (0%)	2 (100.0%)	2 (0.19%)
	3.GBS (AIDP)	11 (91.7%)	1 (8.3%)	12 (1.1%)
	4. Peripheral Neuropathy	22(71.0%)	9(29.0%)	31(2.9%)
	5.CIDP	6(85.7%)	1(14.3%)	7(0.6%)
	6.Polyneuritis Cranialis	1(100%)	0(0%)	1(0.1%)

	7. Optic Neuropathy	1(100%)	0(0%)	1(0.1%)
D) Infectious Diseases	1.CNS TB	10(32.0%)	21(68.0%)	31 (2.9%)
	2.Metabolic Encephalopathy	1 (50.0%)	1 (50.0%)	2 (0.2%)
	3.Meningoencephalitis	2(40%)	3 (60%)	5 (0.5%)
	5.Pott's Disease	2 (100%)	0 (0%)	2 (0.19%)
	6.Pyogenic Meningitis	4(80%)	1 (20%)	5(0.5%)
E) Degenerative Diseases	1. MND	3(75%)	1(25%)	4(0.4%)
	2.Haler Border Spatz Disease	0(0%)	1(100%)	1(0.1%)
F) Hereditary /Congenital Anomaly	1.Cauda Equina Syndrome	0 (0%)	1 (100%)	1 (0.1%)
	2.Wilson's Disease	1(100 %)	0(0%)	1(0.1%)
	3.Limb Girdle Muscular Dystrophy	1(100%)	0(0%)	1(0.1%)
	3.HSP	0(0%)	1 (100%)	1 (0.1%)
G) CNS Tumors	1.ICSOL	5 (83.3%)	1(16.7%)	6(0.5%)
	2.Glioma	1(100%)	0(0%)	1(0.1%)
H) NMJ Disorders	1.Myesthenia Gravis	9 (69.23%)	4(30.77%)	13(1.2%)
I) Headache	1.IIH	2 (11.8%)	15(88.2%)	17 (1.6%)
	2.Migraine	0 (0%)	2(100%)	2 (0.19%)
	3. TTH	0(0%)	4(100%)	4(0.4%)
J) Movement Disorders	1.Parkinson's Disease	3 (60%)	2 (40%)	5(0.5%)
K) Seizure Disorder	1.Epilepsy	4 (100%)	0 (0%)	4 (0.4%)
	2.Status Epilepticus	2 (50%)	2 (50%)	4 (0.4%)
	3.GTCS	1 (50%)	1(50%)	2 (0.19%)
	4.Conversion Disorders	2 (100%)	0 (0%)	2 (0.19%)
L) Myeloradiculopathies	1.PLID	4 (100%)	0 (0%)	4 (0.4%)
	2.Compressive Myelopathy	7 (87.5%)	1 (12.5%)	8 (0.7%)
	3.Spinal SOL	1 (100%)	0 (0%)	1 (0.1%)
M) Acute	1.Pneumonia	10(71.4%)	4(28.6%)	14 (1.3%)

Confusional State	2.UTI	12 (48%)	13 (52%)	25(2.3%)
	3.Hyponatremia	3 (60%)	2 (40%)	5 (0.5%)
N) Miscellaneous	1. Sjogrens Syndrome	0 (0%)	6 (100%)	6 (0.6%)
	2. Psychiatric Disorder	2 (100%)	0 (0%)	2 (0.19%)
	3. DHF	0(0%)	1(100%)	1 (0.1%)
	4. Hypokalemic Periodic Paralysis	1 (25%)	3 (75%)	4 (0.4%)
	5. Myopathy	2 (100%)	0 (0%)	2 (0.2%)
	6.Hypopituitarism	1(100%)	0(0%)	1(0.1%)
	7.Obstructive Hydrocephalous	1(100%)	0(0%)	1(0.1%)
	8.Balbur Palsy	1(50%)	1(50%)	2(0.2%)
	Total	604(56.2%)	471(43.8%)	1075(100%)

### Patients with their final outcome

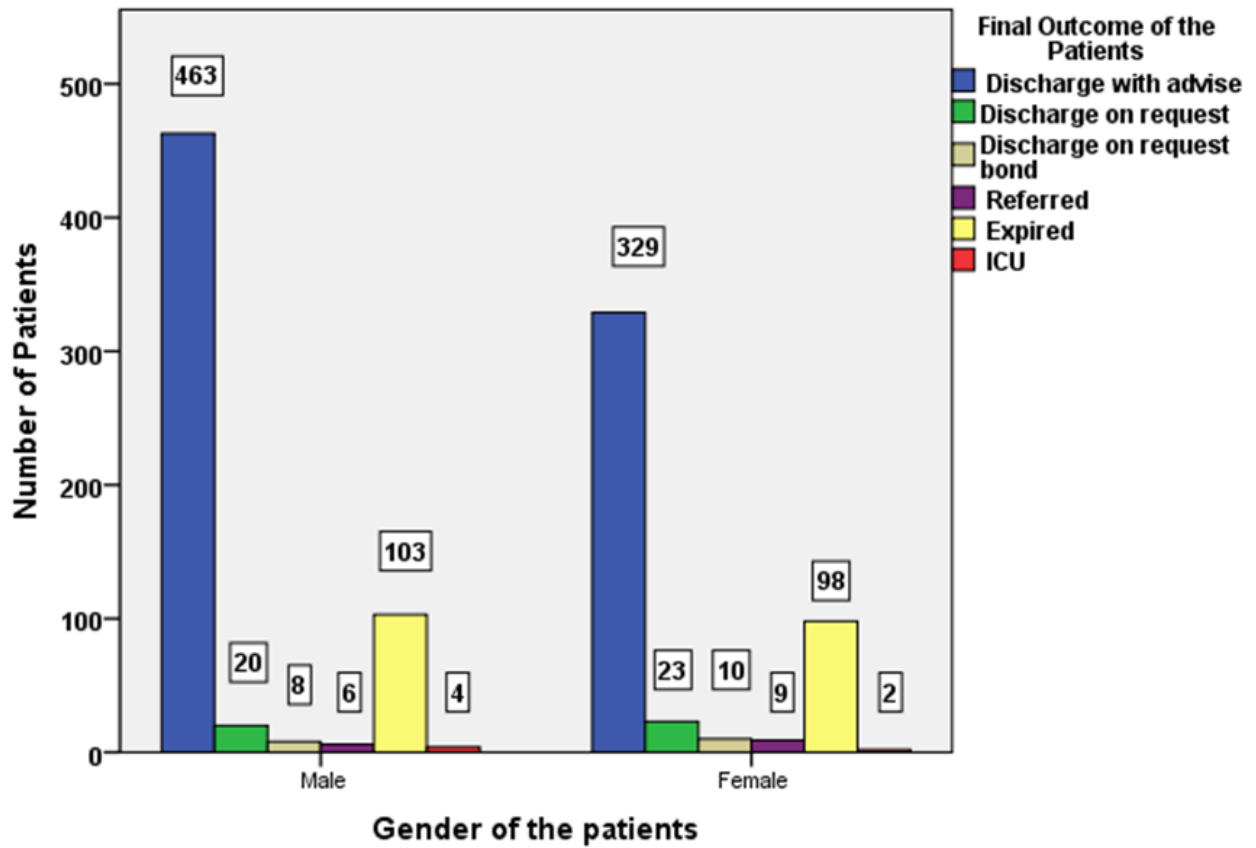
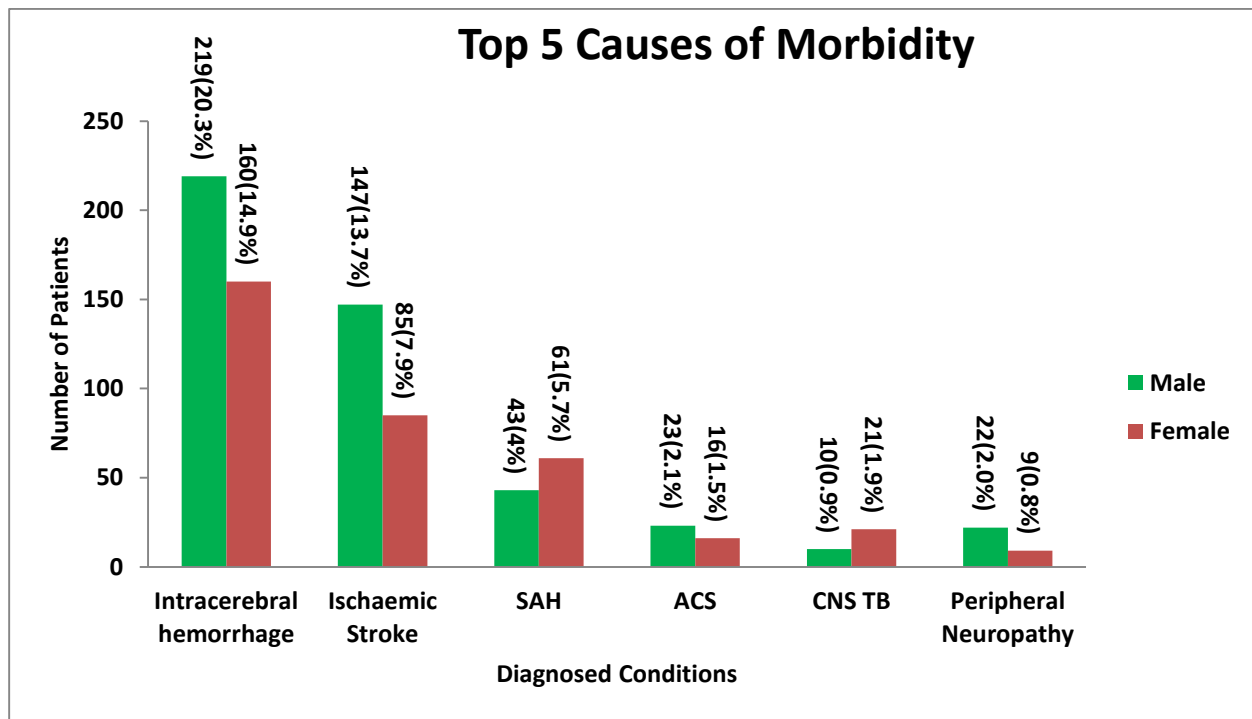


Figure V: Final Outcomes of the patients

**Table 3: Top 5 Causes of Morbidity**

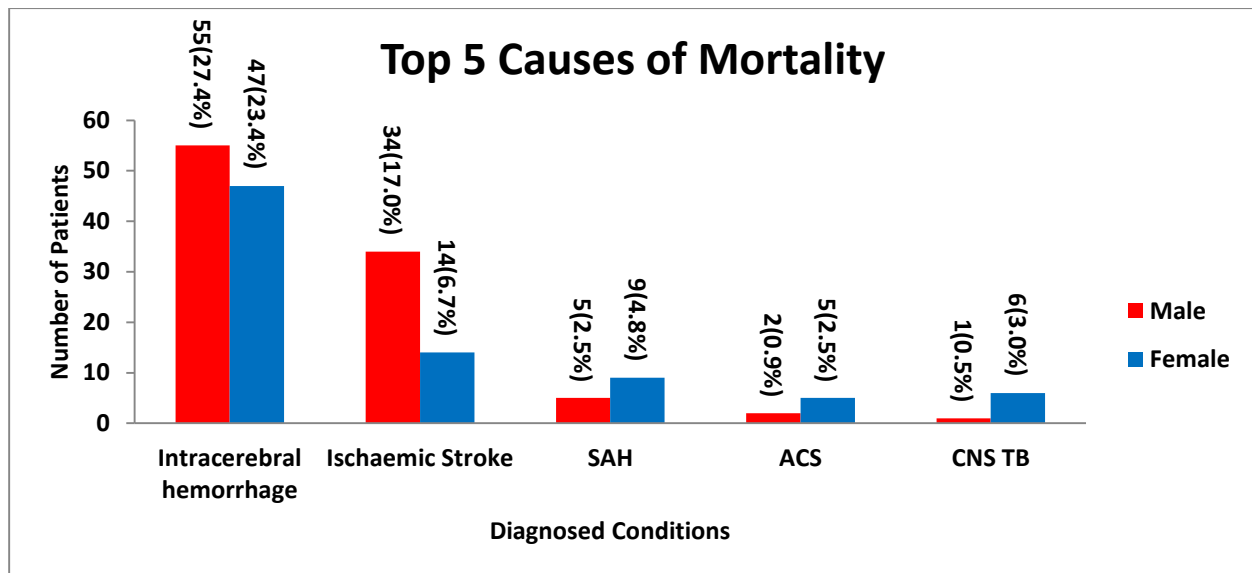
Disease	Male	Female	Total
Intracerebral hemorrhage	219	160	379
Ischaemic Stroke	147	85	232
SAH	43	61	104
ACS	23	16	39
CNS TB	10	21	31
Peripheral Neuropathy	22	9	31
<b>Total</b>	<b>464</b>	<b>352</b>	<b>816</b>



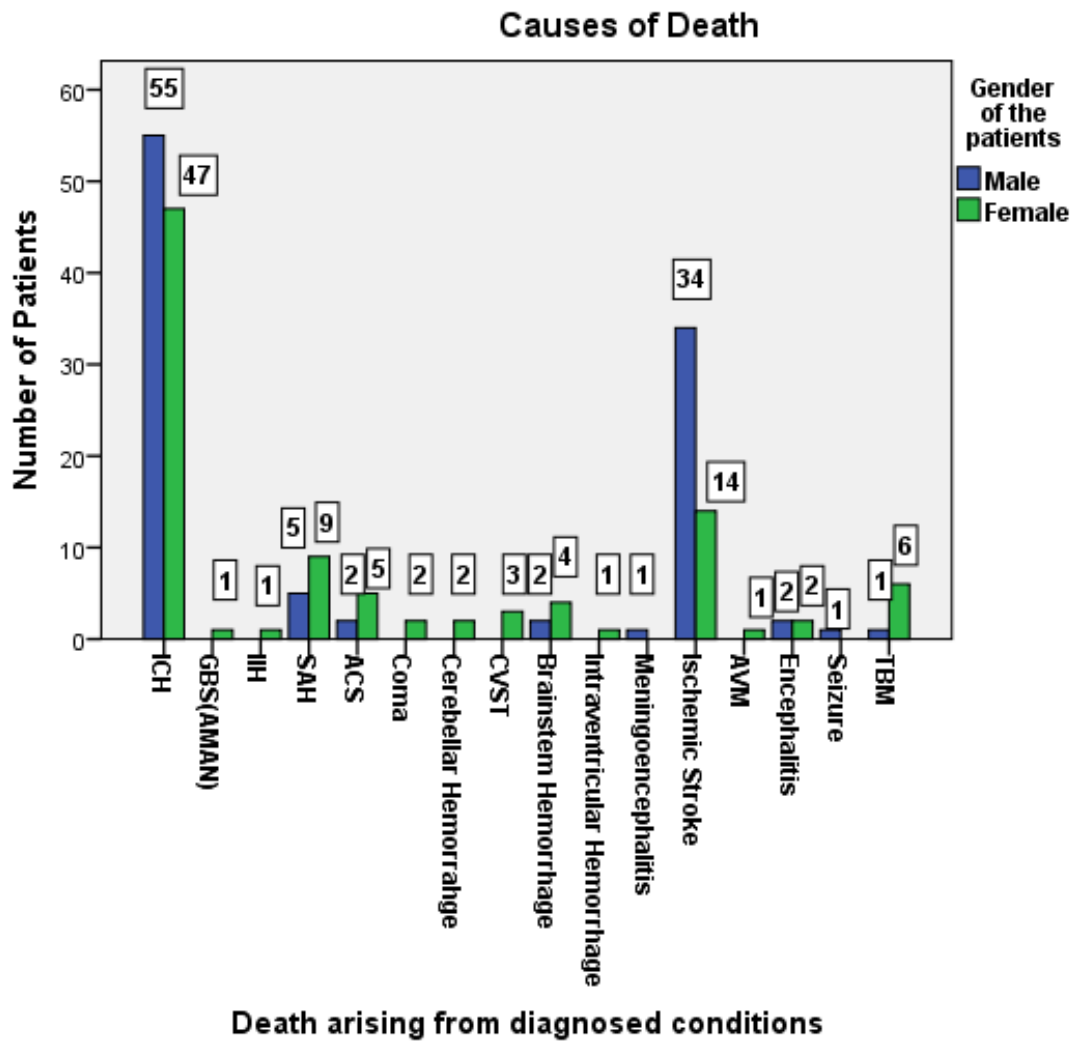
**Figure VI: Top Five causes of Morbidity**

**Table 4: Top 5 causes of Mortality**

Disease	Male	Female	Total
Intracerebral hemorrhage	55	47	102
Ischaemic Stroke	34	14	48
SAH	5	9	14
ACS	2	5	7
CNS TB	1	6	7
<b>Total</b>	<b>97</b>	<b>81</b>	<b>178</b>



**Figure VII: Top 5 causes of Mortality**



**Figure VIII: Causes of Death**

### Patients with their final outcome

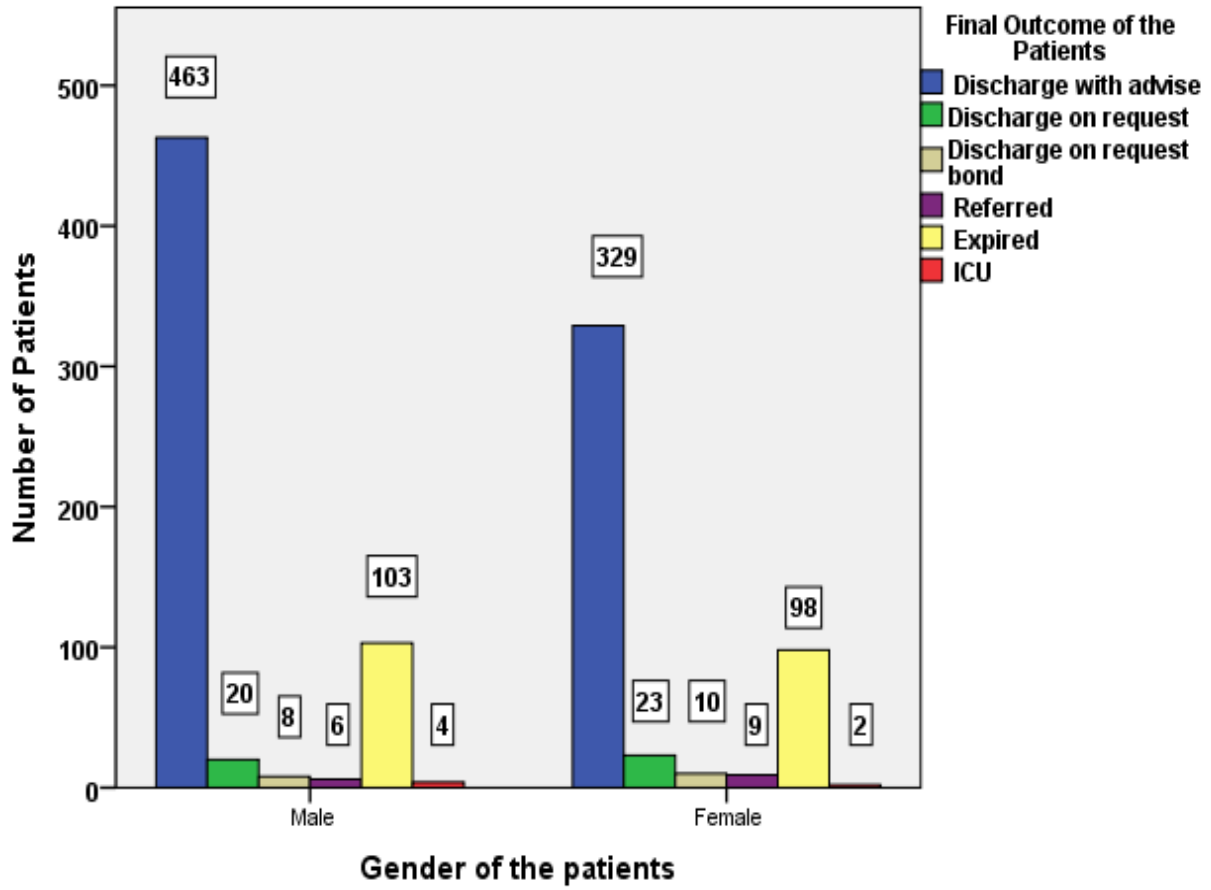


Figure IX: Final Outcome of the Patients